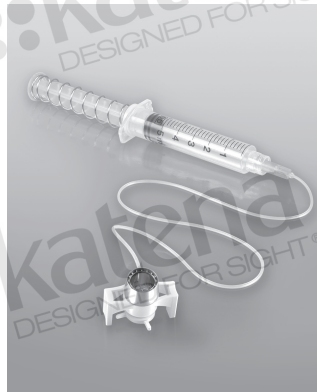


# Barron Vacuum Trephines & Punches

## Barron Radial Vacuum Trephine for the recipient cornea

CAT. NO.	DIAMETER
K20-2050	6.0mm
K20-2052	6.5mm
K20-2054	7.0mm
K20-2055	7.25mm
K20-2056	7.5mm
K20-2057	7.75mm
K20-2058	8.0mm
K20-2059	8.25mm
K20-2060	8.5mm
K20-2061	8.75mm
K20-2062	9.0mm

sterile, disposable

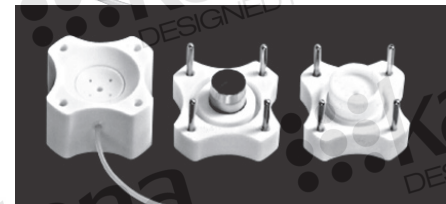


Each sterile, disposable trephine is supplied completely assembled and ready for use.

## Barron Vacuum Punch for the donor cornea

CAT. NO.	DIAMETER	CAT. NO.	DIAMETER
K20-2100	6.0mm	K20-2108	8.0mm
K20-2102	6.5mm	K20-2109	8.25mm
K20-2103	6.75mm	K20-2110	8.5mm
K20-2104	7.0mm	K20-2111	8.75mm
K20-2105	7.25mm	K20-2112	9.0mm
K20-2106	7.5mm	K20-2113	9.25mm
K20-2107	7.75mm	K20-2114	9.5mm

sterile, disposable



CUTTING  
BLOCK

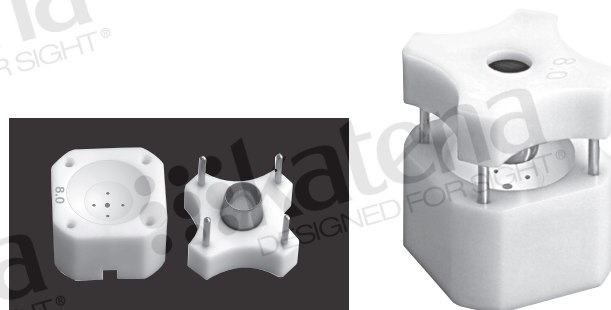
TREPINE  
BLADE

SEATING  
RING

# Barron Non-Vacuum Punches • A/C

## Barron Non-Vacuum Punch for the donor cornea

CAT. NO.	DIAMETER	CAT. NO.	DIAMETER
K20-2070	6.0mm	K20-2078	8.0mm
K20-2072	6.5mm	K20-2079	8.25mm
K20-2073	6.75mm	K20-2080	8.5mm
K20-2074	7.0mm	K20-2081	8.75mm
K20-2075	7.25mm	K20-2082	9.0mm
K20-2076	7.5mm	K20-2083	9.25mm
K20-2077	7.75mm	K20-2084	9.5mm

CUTTING  
BLOCKTREPHINE  
BLADE

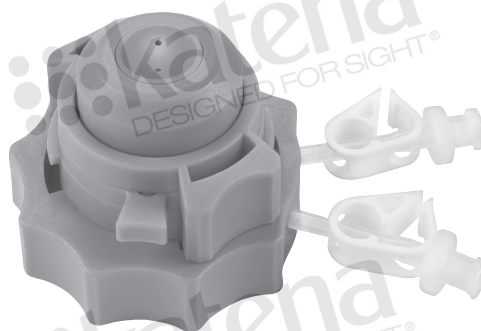
sterile, disposable

## Barron Artificial Anterior Chamber

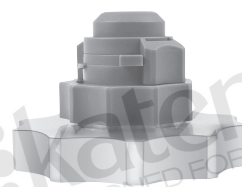
holds a (14-18mm) donor corneal graft  
sterile, disposable  
*To cut the donor cornea from  
the epithelial side.*

**K20-2125**

**K20-2126** stainless steel base,  
reusable



K20-2125

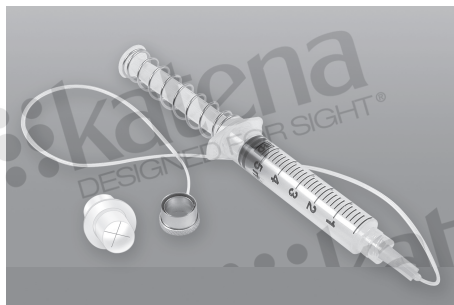


shown with K20-2126 base

## Vidaurri

Fluid Retention Ring  
double-walled vacuum ring  
8.7mm I.D.

**K20-2135**



# Trephine Blades

## Elliot

Scleral Trephine Blade

**K2-7500** 1.0mm diameter

**K2-7510** 1.5mm diameter

**K2-7520** 2.0mm diameter



## Corneal Trephine Blades and Handles



DIAMETER	NON-STERILE BLADES	STERILE BLADES	NON-STERILE HANDLES
6.0mm	<b>K2-8014</b>	<b>K20-2150</b>	<b>K2-8114</b>
6.5mm	<b>K2-8016</b>	<b>K20-2152</b>	<b>K2-8116</b>
6.75mm	<b>K2-8017</b>	<b>K20-2153</b>	<b>K2-8117</b>
7.0mm	<b>K2-8018</b>	<b>K20-2154</b>	<b>K2-8118</b>
7.25mm	<b>K2-8019</b>	<b>K20-2155</b>	<b>K2-8119</b>
7.5mm	<b>K2-8020</b>	<b>K20-2156</b>	<b>K2-8120</b>
7.75mm	<b>K2-8021</b>	<b>K20-2157</b>	<b>K2-8121</b>
8.0mm	<b>K2-8022</b>	<b>K20-2158</b>	<b>K2-8122</b>
8.25mm	<b>K2-8023</b>	<b>K20-2159</b>	<b>K2-8123</b>
8.5mm	<b>K2-8024</b>	<b>K20-2160</b>	<b>K2-8124</b>
8.75mm	<b>K2-8025</b>	<b>K20-2161</b>	<b>K2-8125</b>
9.0mm	<b>K2-8026</b>	<b>K20-2162</b>	<b>K2-8126</b>
9.5mm	<b>K2-8028</b>	<b>K20-2164</b>	<b>K2-8128</b>
14.0mm	<b>K2-8046</b>	—	—
16.0mm	—	<b>K20-2178</b>	—



## Universal

### Trephine Handle

Adjustable handle for use with 7.0 to 9.5mm trephine blades

**K2-8100**

