

SLIT LAMPS TSL-4000 & TSL-7000 series

LED SLIT LAMPS

DELIGHT IN SIGHT

Exceptional optics.
Outstanding reliability.



TSL-7000Hdigital

- Integrated yellow filter
- Exceptional optics
- Work station with application software (TSL-7000Hdigital & TSL-7000Zdigital)
- LED illumination
- Extensive filter and accessory set
- Integrated, high sophisticated camera system (TSL-7000Hdigital & TSL-7000Zdigital)

 **TOMEY**
TECHNOLOGY AND VISION

THE TOMEY TSL-4000 & TSL-7000 series



QUALITY IN DETAIL

Combining classic beauty with modern technology – our **TSL-4000** (3-step magnification) and **TSL-7000 series** (5-step magnification) are the results of ideal style and substance. Enjoy the difference in easy handling with perfectly placed on-board illumination control – surely, high quality, accuracy and reliability are guaranteed. Day by day, you can rely on a perfect diagnostic tool giving your patients the highest level of examination.

**TSL-4000H &
TSL-7000H**



**TSL-4000Z &
TSL-7000Z**



TSL-7000Zdigital



**TAT-100R / TAT-100T
APPLANATION TONOMETER**

- Gold standard in IOP measurement
- Best reproducibility and accuracy
- Reliable and durable



EXCEPTIONAL OPTICS + LED

The passion for high quality optics is present in the entire optical system – accuracy and reliability give the absolute confidence in this system. LED is the preferred light source nowadays. Our LED has been selected for its use and performance with an ideal colour temperature and homogeneous light illumination level.



TAKE CONTROL

The control of variable functions of the slit lamp and digital applications can be done via the slit lamp dashboard, starting with independently controlled main illumination, exposure time of the camera (TSL-7000H*digital* and TSL-7000Z*digital*) up to camera trigger on the joystick.

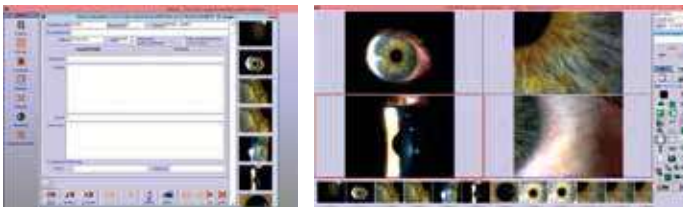
To bring it to perfection – the high attention to mechanical parts provide a comfortable handling and smooth operation.



DIGITAL CAPTURE + PATIENT MANAGEMENT

The TSL-7000H*digital* and TSL-7000Z*digital* come with many features on top of the basic version. Additional to the combined integrated camera and beam splitter the digital series include a background illumination, diffuser and blue filter. Moreover the *Kapture* software with integrated patient database completes this work station.

The camera and review control functions allow capturing and examining these images while being stored in the database. All images and data are entered through easy to use but sophisticated software screens.



SPECIFICATIONS

TSL-4000H / TSL-7000H / TSL-7000Hdigital

| | |
|--|--|
| OPTICAL SYSTEM | |
| Type | Galilean converging binoculars 8° |
| Magnification | Rotating drum change |
| • TSL-4000H | x10, x16, x25 |
| • TSL-7000H / TSL-7000Hdigital | x6, x10, x16, x25, x40 |
| Eyepiece | x12.5 |
| Field of view | 34, 22, 14, 8.5, 5.5 mm |
| Interpupillary distance | 49 to 77 mm |
| Objective lens focal distance | 107 mm |
| Objective lens convergence angle | 13° |
| SLIT PROJECTION AND BASE | |
| Slit width | 0 - 12 mm continuously variable |
| Slit length | 12 mm (1.0 - 12 mm continuously variable) |
| Aperture diameters | 0.2, 1 mm square, 2, 3, 5, 9, 12 mm |
| Filters | Clear, red free, neutral density, diffuser, blue, IR heat absorbing filter permanently installed |
| Slit angle | +/- 90° continuous |
| Slit rotation | +/- 90° with reference scale |
| Slit vertical tilt | 0°, 5°, 10°, 15°, 20° |
| Base travel | 25 mm Z-axis, 107 mm X-axis, 110 mm Y-axis |
| Horizontal fine adjustment | 12 mm |
| Fixation lamp | LED |
| Light source | LED / 12V |
| ADDITIONAL FEATURES | |
| Auxiliary diffuser, yellow filter integrated to optical body, TAT-100R and TAT-100T optional available | |
| DIMENSIONS AND WEIGHT | |
| Dimensions WDH | 350 x 410 x 702 mm |
| Weight | ~ 21 kg |
| POWER SUPPLY | |
| Power supply unit | Switch mode, (100 - 240V input) +/- 10% multi plug compliant to EN 60601-1, EN 61000-6-2, EN 61000-6-3 |
| Power supply output | 12V DC / 2.5 A IEC / EN 60 6001 |

SPECIFICATIONS

TSL-4000Z / TSL-7000Z / TSL-7000Zdigital

| | |
|--|---|
| OPTICAL SYSTEM | |
| Type | Galilean converging binoculars 8° |
| Magnification | Rotating drum change |
| • TSL-4000Z | x10, x16, x25 |
| • TSL-7000Z / TSL-7000Zdigital | x6, x10, x16, x25, x40 |
| Eyepiece | x12.5 |
| Field of view | 34, 22, 14, 8.5, 5.5 mm |
| Interpupillary distance | 49 to 77 mm |
| Objective lens focal distance | 107 mm |
| Objective lens convergence angle | 13° |
| SLIT PROJECTION AND BASE | |
| Slit width | 0 - 14 mm continuously variable |
| Slit length | 14 mm (0 - 14 mm) |
| Aperture diameters | 0.2, 1 mm square, 2, 3, 5, 9, 14 mm |
| Filters | Clear, red free, neutral density, diffuser, blue, IR heat absorbing filter permanently installed |
| Slit angle | +/- 90° continuous |
| Slit rotation | +/- 90° with reference scale |
| Slit vertical tilt | 0°, 5°, 10°, 15°, 20° |
| Base travel | 25 mm Z-axis, 107 mm X-axis, 110 mm Y-axis |
| Horizontal fine adjustment | 12 mm |
| Fixation lamp | LED |
| Light source | LED / 12V |
| ADDITIONAL FEATURES | |
| Auxiliary diffuser, yellow filter integrated to optical body, TAT-100R and TAT-100T optional available | |
| DIMENSIONS AND WEIGHT | |
| Dimensions WDH | 350 x 432 x 604 mm |
| Weight | ~ 19 kg |
| POWER SUPPLY | |
| Power supply unit | Switch mode, (100V - 240V input) +/- 10% multi plug compliant to EN 60601-1, EN 61000-6-2, EN 61000-6-3 |
| Power supply output | 12V DC / 2.5 A IEC / EN 60 6001 |

SPECIFICATIONS TSL-7000Hdigital / TSL-7000Zdigital

| | | | |
|---|--------------------------|-------------|----------|
| BASE UNIT | | | |
| Integral USB hub, joystick trigger system, auto left/right detection, +/- camera exposure controls, freeze frame image review control | | | |
| ILLUMINATION SYSTEM | | | |
| External LED background illumination system, blue filter for background illumination system | | | |
| CAMERA SYSTEM | | | |
| Resolution | 2 Megapixel: 1600 x 1200 | Chip size | 1 / 1.8" |
| Connectivity | USB 3.0 | Frame rate | 17.5 fps |
| | | Sensor type | CCD |



TOMEY EUROPE
TOMEY GmbH
Wiesbadener Straße 21
90427 Nürnberg, Germany
Phone +49 911 938 546 2 0
Fax +49 911 938 546 2 20
Email info@tomey.de

TOMEY ASIA-PACIFIC
TOMEY CORPORATION JAPAN
2-11-33 Noritakeshinmachi
Nishi-ku, Nagoya 451-0051, Japan
Phone +81 52 581 5327
Fax +81 52 561 4735
Email intl@tomey.co.jp

TOMEY
TECHNOLOGY AND VISION

www.tomey.de