

# c.stim™

**DRY EYE  
TREATMENT**



 **Quante  
medical**  
BY LUMIBIRD MEDICAL

**I.P.L. System  
Intense Pulsed Light**

# c.stim™

## ELEGANT DESIGN FOR EASE OF USE



### INTERFACE

Large HD screen  
Easy to use  
Intuitive interface



### DESIGN

Compact  
Elegant  
Robust



### HANDPIECE

Ergonomic shape  
Tip adapted to the facial area  
Precise treatment  
Easy to clean



### TROLLEY

Ergonomic  
Multiple storage areas  
Mobile on castors

# Dry eye treatment

## STATE-OF-THE-ART TECHNOLOGY WITH CLINICAL BENEFITS

### Safe and effective treatment with Stim-ULI™ technology

Our C.Stim™ revolutionary IPL relying on our unique Stim-ULI™ (Uniform Light Intensity) technique offers the best combination of clinical efficacy and patient comfort.

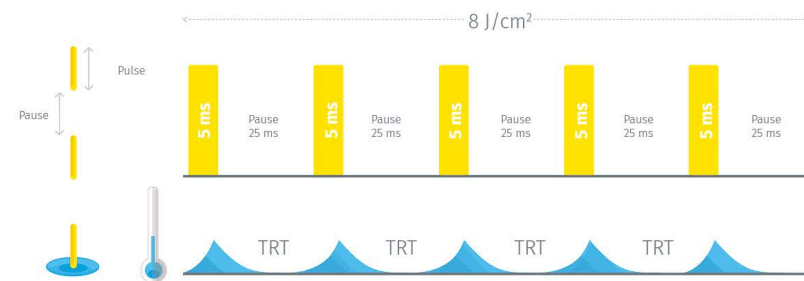


### Single handpiece with integrated water-based cooling system:

- Improved patient comfort
- Applies a thin layer of gel during treatment
- Delivers the same energy level from first to last shot
- Optimal preservation of flash lamp life: 30,000 shots/3,750 sessions

### Regulated pulse train for safety and effectiveness

- Respects the skin's thermal relaxation time (TRT)
- No thermal damage to the skin
- No inflammatory reaction
- Controlled energy accumulation for better results



### Safe and effective treatment for phototypes 1 to 5

- Light spectrum of 610 nm to 1,200 nm is less absorbed by melanin
- Energy controlled by pulse train, limiting increase in tissue temperature
- Stim-ULI™ technology for a perfectly homogeneous energy distribution

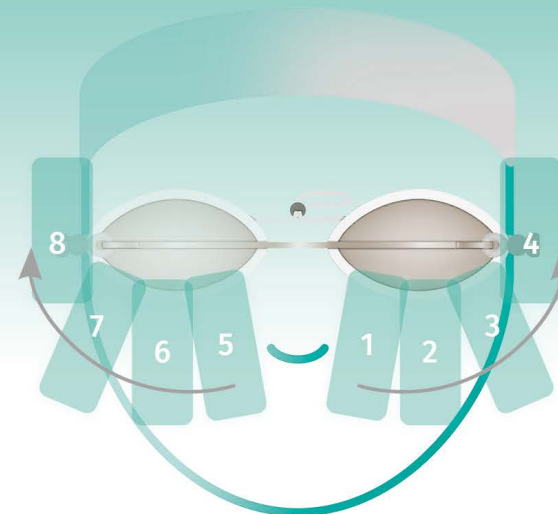


## TREATMENT: A FAST, SIMPLE PROTOCOL

- 1 **SESSION** in less than 10 minutes
- 2 **WEEKS** between sessions
- 3 **SESSIONS** for complete treatment
- 4 **SHOTS** per side

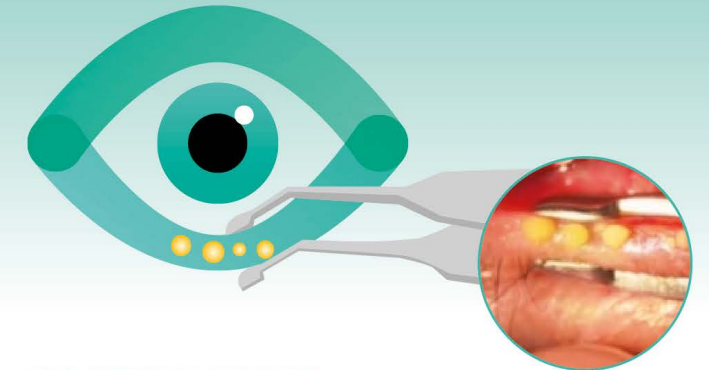


### DURING TREATMENT



4 SHOTS ON THE LOWER PERI-ORBITAL AREA

### AFTER TREATMENT



FOR OPTIMAL RESULTS: MANUAL MEIBUM EXPRESSION, MADE EASIER BY THE HEAT FROM C.Stim I.P.L.

## ADDED VALUE FOR CLINICAL PRACTICE

### PRACTITIONER

- Multi-action treatment offer
- Fast, simple treatment
- Combination treatments for long-term results
- Optimisation of post-surgical outcome when used before surgery (refractive, cataract)
- Improved patient compliance with topical glaucoma treatment
- Contact lenses can be worn for longer
- No consumables

### PATIENT

- Safe, effective, long-lasting treatment
- Better quality of life
- Comfortable treatment
- No disruption to social life
- Reduction in symptoms from the first session
- Neuropathic pain relief
- Improved contact lens comfort
- Patient satisfaction after refractive and cataract surgery
- Improved tolerance of topical glaucoma treatments

# Dry eye treatment

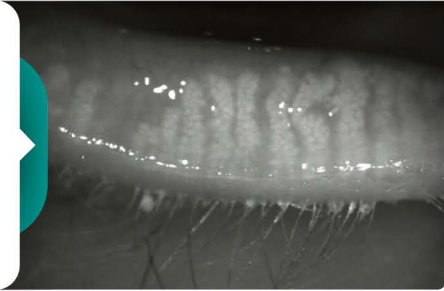
TREAT  
THE ROOT  
CAUSES:



MULTIPLE MECHANISMS  
OF ACTION WITH C.Stim  
I.P.L. THERAPY:

1

M.G.D.  
Meibomian Gland Dysfunction



**SPEED UP MEIBOMIAN GLAND AND LACRIMAL GLAND METABOLISM** by stimulating the parasympathetic nervous system [1,2,3,4,5,6]

2

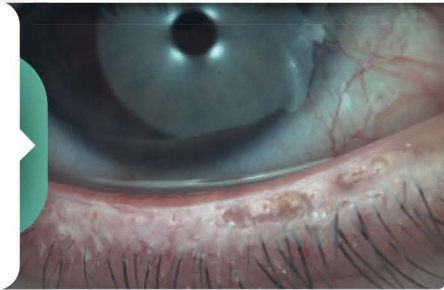
INFLAMMATION



**LIQUEFY MEIBUM FOR MEIBOMIAN GLAND EXPRESSION** using the heat generated by I.P.L. [7]

3

DEMODEX



**STOP THE VICIOUS CYCLE OF CHRONIC INFLAMMATION** by coagulating new blood vessels and reducing inflammatory agents [8,9,10,11]

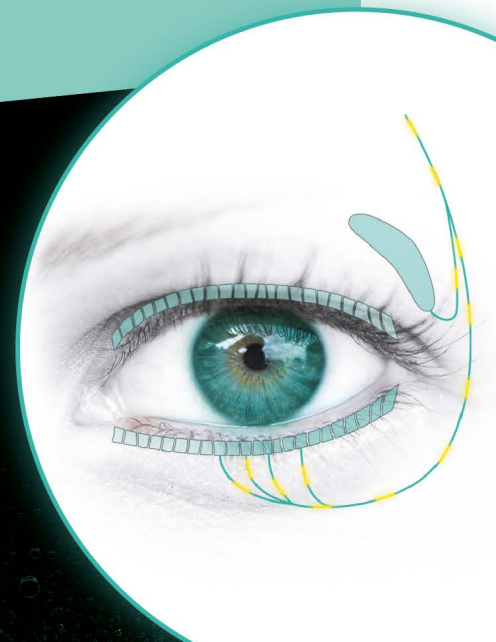


**DECREASE DEMODEX** through coagulation and necrosis of the pigmented exoskeleton [9,12,13]

+

**MULTIPLE  
CLINICAL  
RESULTS:**

- Improved tear film quality [14,15,21]
- Better meibum quality and expression [16,17]
- Reduction in patient symptoms [17]
- Neuropathic pain relief [18]
- Reduced inflammatory markers (cytokines) in tears [19,20]





## TECHNICAL SPECIFICATIONS

### GENERAL INFORMATION

Technology	I.P.L. (Intense Pulsed Light)
Wavelength	610 – 1,200 nm
Fluence	1 to 14 J/cm <sup>2</sup>
Spot size	18 x 45 mm
Stim-ULI™ technology	<b>Uniform Light Intensity</b> Unique technology for a perfectly homogeneous energy distribution (FR patent pending)
Dimensions	540 (H) x 320 (W) x 380 (D) mm
Weight	25 kg
Filter	610 nm, anti-UVA, UVB and UVC filter
Cooling system	Water
Flash lamp	Xenon lamp
Power supply	110/230 VAC, 50/60 Hz
Operating temperature	15 – 35 °C
Treatment duration	3 to 4 sessions
Accessories	Operator protective glasses, patient protective goggles
Marking	CE medical, class IIb

*The company reserves the right to modify the technical specifications without prior warning.  
©2021. Quantel Medical, c.Stim™ is a registered trademark of Quantel Medical. All rights reserved*

### BIBLIOGRAPHY

1. Parasympathetic Innervation of the Meibomian Glands in Rats – Mark S. LeDoux et al. – Investigative Ophthalmology & Visual Science, October 2001, Vol. 42, No. 11.
2. Characterization of the innervation of the meibomian glands in humans, rats and mice – Bründl, M. et al. Annals of Anatomy (2021), Vol. 233.
3. Neurotransmitter Influence on Human Meibomian Gland Epithelial Cells – Wendy R. Kam and David A. Sullivan – Investigative Ophthalmology & Visual Science, November 2011, Vol. 52, No. 12.
4. The Dopaminergic Neuronal System Regulates the Inflammatory Status of Mouse Lacrimal Glands in Dry Eye Disease – Ji, Yong Woo et al. Investigative Ophthalmology & Visual Science (2021), Vol. 62.
5. TFOS DEWS II Pathophysiology Report – Anthony J. Bron, et al. – The Ocular Surface, 2017, p 441 to 515.
6. The neurobiology of the meibomian glands – Cox SM, Nichols JJ – Ocular Surface, July 2014.
7. Multicenter Study of Intense Pulsed Light Therapy for Patients with Refractory Meibomian Gland Dysfunction – Reiko Arita, et al. – Cornea Volume 37, Number 12, December 2018.
8. Rosacea: Molecular Mechanisms and Management of a Chronic Cutaneous Inflammatory Condition – Yu Ri Woo, et al. International Journal of Molecular Sciences, September 2016.
9. Rosacea: Epidemiology, pathogenesis, and treatment – Barbara M. Rainer et al. – DERMATO-ENDOCRINOLOGY 2018, VOL. 9, NO. 1, e1361574 (10 pages).
10. Treatment of ocular rosacea – Edward Wladis et al. – Survey of Ophthalmology (2018), Vol. 63.
11. Improved telangiectasia and reduced recurrence rate of rosacea after treatment with 540 nm-wavelength intense pulsed light: A prospective randomized controlled trial with a 2-year follow-up – Luo, Y. et al. – Experimental and Therapeutic Medicine (2020), Vol. 19.
12. Therapeutic Effect of Intense Pulsed Light on Ocular Demodicosis – Zhang, X., et al. – Current Eye Research 2019, Vol. 3.
13. Intense Pulsed Light Therapy for Patients with Meibomian Gland Dysfunction and Ocular Demodex Infestation – Cheng et al. – Current Medical Sciences (2019), Vol. 39.
14. Long-term effects of intense pulsed light treatment on the ocular surface in patients with rosacea-associated meibomian gland dysfunction – Seo Kyoung Yul et al. – Contact Lens and Anterior Eye (2018), Vol. 41.
15. TFOS DEWS II Tear Film Report – Willcox Mark et al. – The Ocular Surface (2017), Vol. 15.
16. Intense Pulsed Light for the Treatment of Dry Eye Owing to Meibomian Gland Dysfunction – Vigo, L. et al. – Journal of Visualized Experiment (2019), N°146.
17. Meibum Expressibility Improvement as a Therapeutic Target of Intense Pulsed Light Treatment in Meibomian Gland Dysfunction and Its Association with Tear Inflammatory Cytokines – Choi, M. et al. – Scientific Reports (2019), Vol. 9.
18. TFOS DEWS II Pain and Sensation Report – Belmonte Carlos, et al. – The Ocular Surface (2017), Vol. 15.
19. Analysis of Cytokine Levels in Tears and Clinical Correlations After Intense Pulsed Light Treating Meibomian Gland Dysfunction – LIU, R et al. – American Journal of Ophthalmology (2017).
20. Effect of inflammation on lacrimal gland function – Driss Zoukhri – Experimental Eye Research, May 2006; 82(5): 885–898.
21. Aqueous deficiency is a contributor to evaporation-related dry eye disease – Charles W. McMonnies – Eye and Vision (2020) 7:6.

Patient information:  
[www.mydryeyedisease.com](http://www.mydryeyedisease.com)

[www.quantel-medical.com](http://www.quantel-medical.com)

### Manufacturer

Quantel Medical  
1 Rue du Bois Joli – CS40015  
63808 Cournon d'Auvergne – FRANCE  
Tel.: +33 (0)4 73 745 745  
Email: [contact@quantelmedical.fr](mailto:contact@quantelmedical.fr)  
ISO 9001 : 2015 – ISO 13485 : 2016

### Headquarters

Lumibird Medical  
1 Rue du Bois Joli – CS40015  
63808 Cournon d'Auvergne – FRANCE  
Tel.: +33 (0)4 73 745 745



A brand of  LUMIBIRD  
MEDICAL

QUANTEL MEDICAL - ELLEX - OPTOTEK MEDICAL