

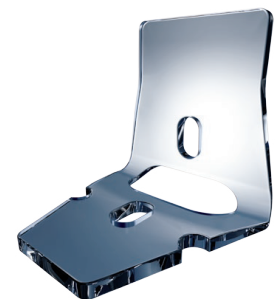


ESNOOPER CLIP



Glaucoma Implant

Brand name	ESNOOPER CLIP
Reference	VCLIP-AJL
Description and indication	<p>The ESNOOPER CLIP uveoscleral implant is a non-absorbable implant whose double-plate design provides two drainage channels: Trabecular (intraescleral and supraciliary) and uveoscleral that facilitates the drainage of aqueous humor. The ESNOOPER CLIP uveoscleral implant is indicated for non-penetrating deep sclerectomy (NPDS) in open-angle glaucoma surgery.</p> <p>For implantation, the notched plate must be inserted in the suprachoroidal space and the upper plate is positioned on the scleral bed. The lateral notches are desing for the implant to be secured perfectly, thus preventing movement, without the need for sutures.</p>
Dimensions	5.50mm X 1.30mm X 2.20mm.
Orifices	3 (drainage).
Material	Hydroxyethyl Methacrylate (HEMA).
Sterilisation method	Steam.
Package	The ESNOOPER CLIP implant is supplied single and sterile in a vial, housed by a clamp support that is immersed in high purified water to maintain it properly hydrated.
Shelf-life	3 years
* Product with CE marking	



NPDS surgical instruments (recommended)

Brand name	KIT EPNP	Product code	AJL- KIT-001
Definition	NPDS (non-penetrating deep sclerectomy) Kit .		
Description	<p>The NPDS Kit is presented non sterile in a rigid plastic blister with the following items (*):</p> <ul style="list-style-type: none"> • EPNP-2001 Liebermann Speculum 14mm. • EPNP-2002 Double Scleral Marker. • EPNP-2003 Mermoud Spatula. • EPNP-2004 Mermoud Clamp. • EPNP-2005 Curved micro-scissor. • PST-4600A Sterilization box (10x16x2 cm). 		



* The instruments can be supplied as a set (NPDS Kit) or separately.

CE 2797



V-04-01-AAR-IMP REV.00