



DISPOSABLE
MICROSURGERY KNIFE

Ideal cutting performance

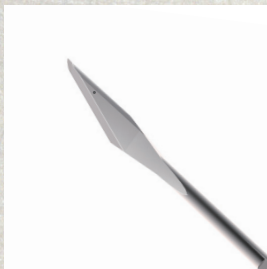


DISPOSABLE MICROSURGERY KNIFE

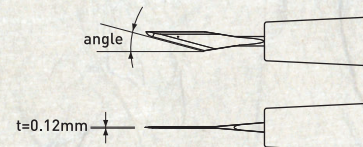
STAB KNIVES

Cataract Surgery / Scleral Tunnel Incision - Pregroove, Side port
/ Clear Corneal Incision - Side port

- Forging technology improves rigidity and paracentesis strength.
- Excellent cutting performance prepared by Double Chemical Etching.
- Suitable for Lamellar Scleral Dissection and Sideport Incision.
- Slim blade shape not to restrict the field of view.



Item No.	Angle
ST15	angle 15°
ST225	angle 22.5°
ST30	angle 30°



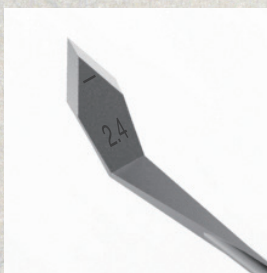
Indicator Dot

The dot indicates the 1.0 mm width of the blade.

SLIT KNIVES

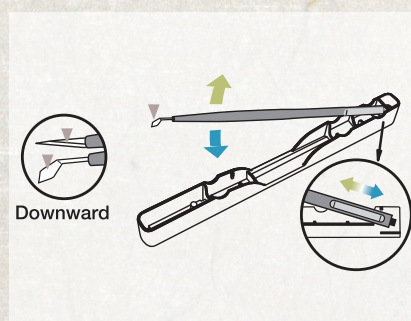
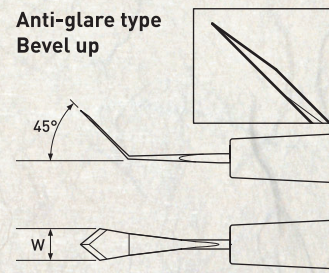
Cataract Surgery / Scleral Tunnel Incision - Anterior Chamber Entry

- Forging technology improves rigidity and controllability.
- Excellent cutting performance prepared by Double Chemical Etching.
- Anti-glare finish prevents reflection in surgery.
- Compact head suitable for treating patients with short palpebral fissures or deep set eyes.
- Recommended for Scleral Tunnel Incision, and can be used for Transconjunctival Single-Plane Sclerocorneal Incision and Clear Corneal Incision.



Item No.	Blade Width
SL22	w=2.2mm
SL24	w=2.4mm
SL275	w=2.75mm
SL28	w=2.8mm
SL30	w=3.0mm

Anti-glare type Bevel up

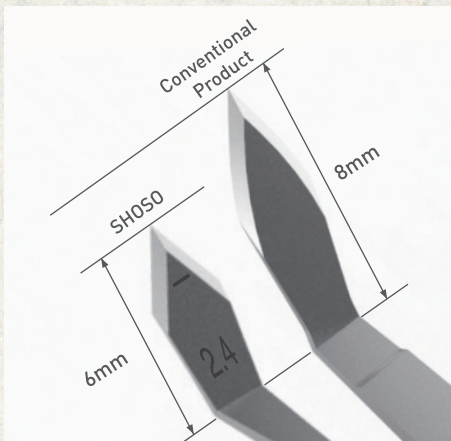
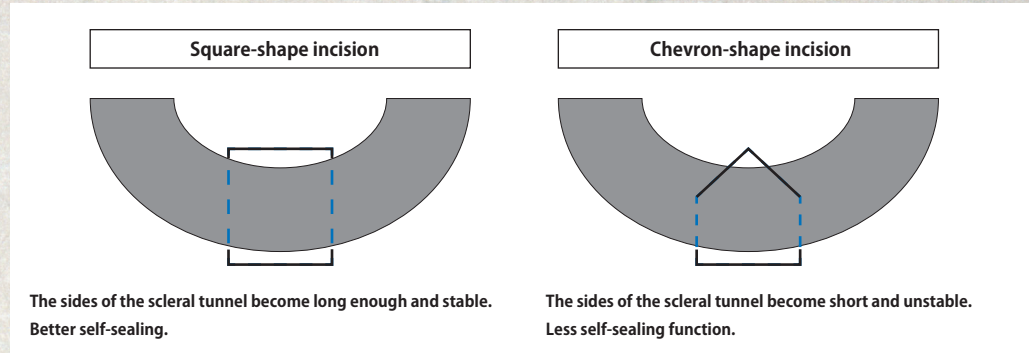


Sterile and single use
Each knife in a protection tray
5 pieces per dispenser box
GS1-128 bar-code



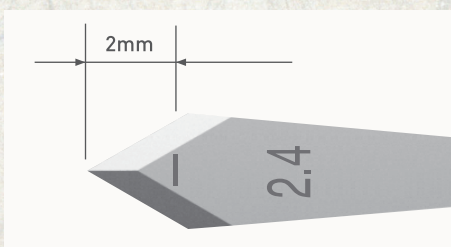
Slit Knife Features

With obtuse angle, SHOSO Slit Knives can create inner valve incision shape square which leads to better self-sealing.



Improved Controllability

The angle is made at 2.0 mm closer from the tip, improving controllability when approaching from above, especially useful for those patients with short palpebral fissures or deep set eyes. During incision, the point of load comes close to the handle axis, and force is transmitted more efficiently. Desired movement and improved sharpness are achieved successfully.



Indicator Line and Blade Width

The guiding line 2.0 mm from the tip facilitates tunnel formation. The blade width is visible on each blade.

Japan Power



Our production facility is located in Seki City, Gifu Prefecture, with a history of 800 years in the Japanese sword manufacturing industry. 'Japanese swords never bend over or break, but cut well.' The essential points of Japanese swords can be summarized in this sentence. We are proud of forging technology that has been handed down from generation to generation in Japan. This sophisticated technology is represented by this new product line SHOSO characterized by delicate but strong sharpness. SHOSO is a new brand expressed by two kanji characters indicating technical capability and creativity. Like the seal put on the hanging scroll, which is understood as certification of its work, there are two characters on a red background. This logo symbolizes KAI's high quality and pride.



Japanese traditional handle colors



Sophisticated black colored box with Samurai sword image



KAI makes continuous efforts to promote medical safety and patients' QOL.

Product specifications may change without notice.



kai industries co., ltd.

1110, Oyana, Seki City, Gifu Pref., 501-3992, Japan
Phone: +81 (0) 575 28 6600
Fax: +81 (0) 575 28 6611
E-mail: info-ind@kai-group.com
www.kai-group.com/global/en/



kai Europe GmbH

Kottendorfer Straße 5, 42697 Solingen, Germany
Phone: +49 (0) 212 23 23 80
Fax: +49 (0) 212 23 23 899
E-mail: info@kai-europe.com
www.kai-europe.com