

# Rx,

the first **handheld femtolaser** instrument for **capsulotomy**



# Rx the first handheld and battery powered femtosecond laser instrument

## Ergonomic instrument

Rx is an handheld instrument that gives surgeons full control during the procedure and offers:

- an ergonomic, light weight handpiece (1,2 kg),
- comfortable experience for the patient<sup>(1)</sup>,
- the possibility for the surgeons to center their anterior capsulotomy wherever they want.

## Integrated into patient flow

Thanks to its small footprint, the Rx femtolaser is integrated into surgeon patient flow:

- 30 seconds procedure duration: no extra time compared to manual capsulotomy,
- can be used in **non sterile** environment,
- compact femtolaser: 50x50x110 cm (LxIxh),
- easy to move: on wheels (55 kg),
- battery powered up to 40 procedures with one single charge.

## Easy to use

Rx performs capsulotomy with a sterile single use patient interface.

The patient interface design allows:

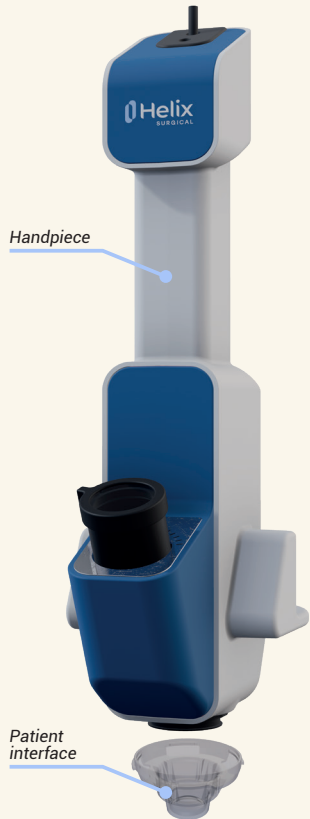
- **suction free** patient interface,
- user friendly,
- cost efficient.

<sup>(1)</sup>Assessment of a handheld femtosecond laser instrument to perform anterior capsulotomy during cataract surgery. F. Lignereux (Institut Ophtalmologique Sourdille Atlantique Nantes), F. Deloison (ILASIS Laser), F. Salin (ILASIS Laser), P. Deslandes (ILASIS Laser), B. Jouannaud (ILASIS Laser), D. Touboul (CHU Bordeaux).

# Design based on frugal engineering

Frugality means using best available resources to meet needs in a constrained environment.

Driven by this philosophy, Helix Surgical designed Rx, focusing solely on a critical step of cataract surgery: the capsulotomy.



# Round, centered, and predictable capsulotomy

## Fully predictable circular capsulotomy

Thanks to a femtosecond laser technology combined with an ergonomic handpiece, Rx guarantees surgeons a round, centered and predictable capsulotomy.



**Round and centered:** To perform the capsulotomy, the Rx handpiece includes two target circles allowing to aim and center the laser shot.

**Predictable:** As a femtolaser, Rx performs a reproducible  $\varnothing$  5.0 mm capsulotomy.



Target  $\varnothing$  3.5 mm

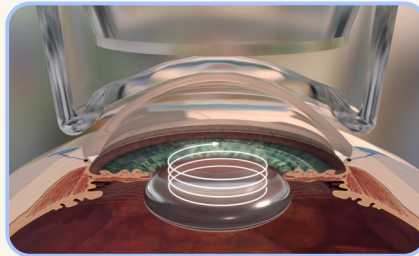
Laser cut  $\varnothing$  5 mm

Target  $\varnothing$  6.5 mm

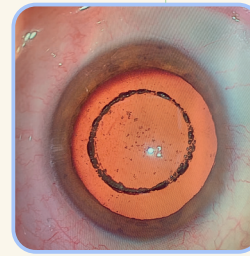
## Fast procedure

Rx performs the anterior capsulotomy by a Helix-shaped laser beam cut:

- Laser cut duration: 4 s,
- Capsular bag cut: 20 ms.



Helix-shaped laser beam cut



Result:  $\varnothing$  5 mm capsulotomy

Scan to watch  
**Rx video**  
on YouTube



# Specifications

## System parameter

### Specifications

Type of laser	Femtolaser (100% fiber-optic laser)
Laser source	Diode pump fiber laser
Central wavelength of the laser	1,030 nm +/- 1 nm
Laser pulse duration	~1k fs
Input voltage & maximum power	Class II equipment; 100-240VAC, 50-60 Hz, <3A

## Dimension & weight

### Specifications

Rx machine height	1100 mm
Rx Footprint	490 mm x 500 mm
Rx weight	55 kg
Station to Handpiece cord length	2 m
Handpiece	L=180 mm, D=175 mm; H=394 mm
Handpiece weight	1,2 kg



Distributed by



**Medilas AG**  
Zürcherstrasse 39E  
CH-8952 Schlieren  
T+41 44 747 40 00  
info@medilas.ch/  
www.medilas.ch

Manufacturer:  
ILASIS LASER  
CE 0459

Read labelling and instructions before the use of Ilasis medical device.  
These products must be handled by trained and qualified staff who have read the instructions before use.

**Helix**  
SURGICAL  
A brand of Ilasis laser

ILASIS LASER  
8 rue Adrienne Bolland, 33600 Pessac  
+33 (0)5 64 31 19 30 - contact@ilasis.com

